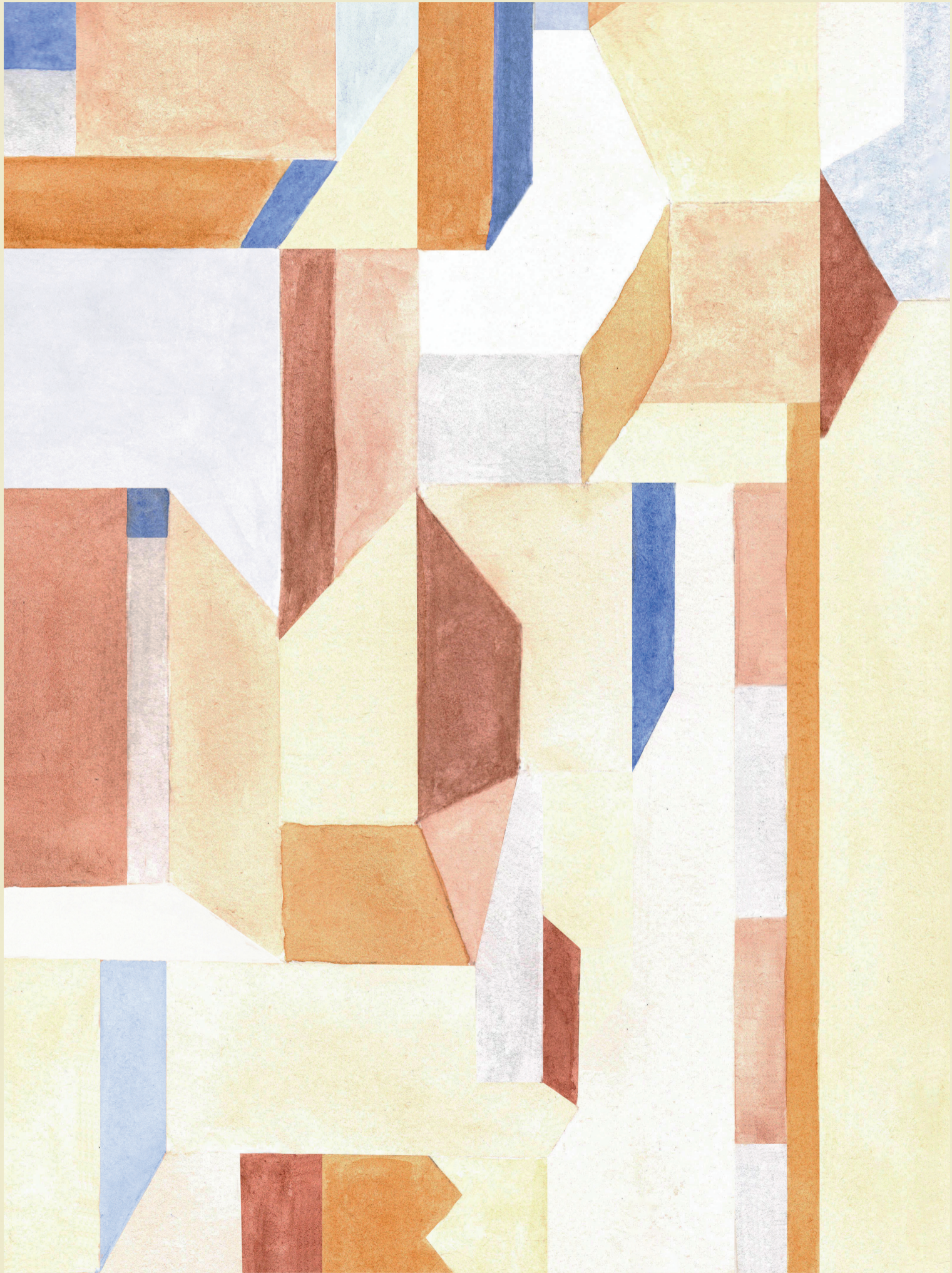
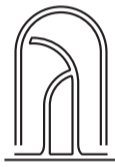


ANDO

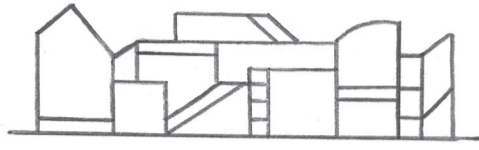
Living



SANTA CATARINA HOUSE



This is not just an apartment to stay or live in,
but a lifestyle-serviced residence built around
business and leisure, connecting a community
of travelers and locals alike.



PORTO

WHERE HISTORY MEETS CULTURE

AS PORTUGAL'S SECOND-LARGEST CITY AND A WORLD HERITAGE SITE PROCLAIMED BY UNESCO, PORTO IS A WONDROUS DESTINATION OF HISTORY AND CULTURE COLLIDING. WORLD-FAMOUS FOR ITS SWEET RED PORT WINE, THIS CITY OFFERS SOMETHING MORE THAN INCREDIBLE ARCHITECTURE, DELICIOUS SEAFOOD AND CONTEMPORARY MUSEUMS; IT OFFERS TASTE.

DECORATED WITH AZULEJO TILES AND SIX WORK OF ART BRIDGES, THIS EUROPEAN DISTRICT CONNECTS HISTORY WITH CULTURE CLASHING BAROQUE CHURCHES WITH A HIGH-END SHOPPING STREET AND TOURISTIC SPOTS WITH LOCAL FINDS. YOU MAY

ENJOY THE LOCAL INTERPRETATIONS OF WELL-KNOWN RECIPES WHILE ENJOYING A SHOPPING SPREE ON ITS MOST FAMOUS STREETS, OR SIMPLY LIE DOWN ON ITS BEACHES AND ENJOY THE SUNNY WEATHER DURING THE WARMER MONTHS.

LOCATED ALONG THE DOURO RIVER, THE CITY OVERSEES A MASS OF HIGH VIEWPOINTS ON ITS HILLS AND PERFECT SUNSETS TO ENJOY. THIS YOUNG AND ENERGETIC CITY IS THE PERFECT DESTINATION FOR A SHORT TERM GET-AWAY TO FEED THE SOUL AND CLEAR THE MIND.



SANTA CATARINA

PORTO'S MAIN SHOPPING STREET

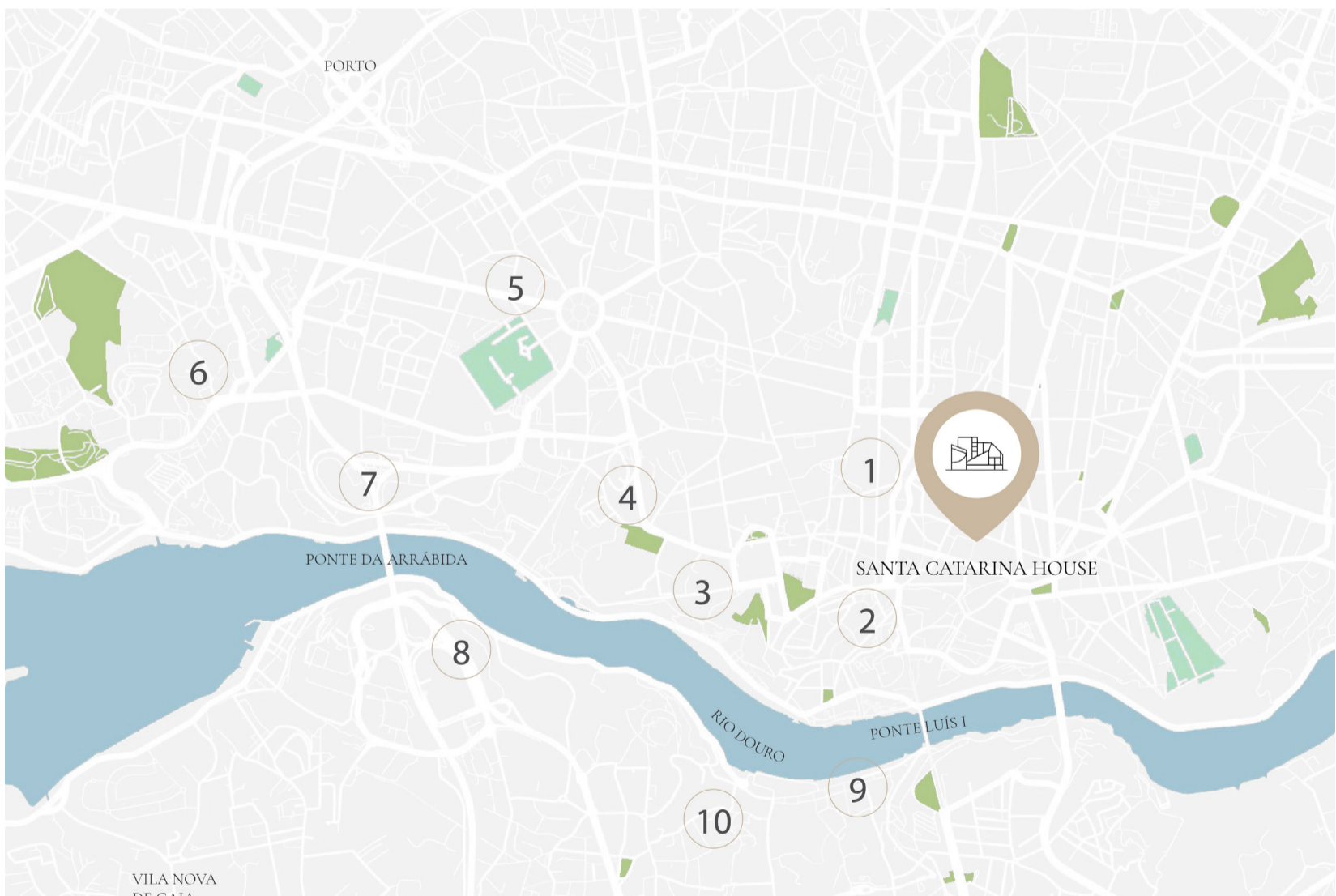
ANDO LIVING SANTA CATARINA HOUSE IS THE EPITOME OF URBAN LUXURY, LOCATED IN THE HEART OF PORTO'S MOST SOUGHT-AFTER NEIGHBORHOOD. JUST A STONE'S THROW AWAY FROM THE CITY'S MAIN BOULEVARD, AVENIDA DOS ALIADOS, RESIDENTS WILL HAVE EASY ACCESS TO ALL THE TOP ATTRACTIONS THAT PORTO HAS TO OFFER.

THIS BUSTLING SANTA CATARINA PEDESTRIAN STREET IS HOME TO A PLETHORA OF INTERNATIONAL STORES, AS WELL AS A DIVERSE ARRAY OF RESTAURANTS, STREET VENDORS, AND COFFEE SHOPS, INCLUDING THE RENOWNED CAFÉ MAJESTIC. THE MERCADO DO BOLHÃO, A MUST-SEE HISTORICAL MARKET, IS ALSO JUST A SHORT WALK AWAY.

*ABOVE
PANAROMIC VIEW OF OLD PORTO. OPORTO CITY AND RIBEIRA OVER DOURO RIVER FROM VILA NOVA DE GAIA, PORTUGAL*

*RIGHT PAGE, MAP
SANTA CATARINA DISTRICT*

*PLACES OF INTERESTS
1. BOLHÃO / 2.SÉ DO PORTO / 3.PALÁCIO DA BOLSA / 4.CLÉRIGOS / 5.CASA DA MÚSICA / 6.FOZ DO DOURO / 7.JARDIM BOTÂNICO DO PORTO / 8.GRAHAM'S PORT LODGE 9.CAVES CALEM / 10.THE YEATMAN HOTEL*



ANDO LIVING

SANTA CATARINA HOUSE

06



THE BUILDING

THE PRIME LOCATION OF THE BUILDING OFFERS RESIDENTS THE PERFECT BALANCE OF CITY LIVING AND CONVENIENCE, BEING SURROUNDED BY BOTH HISTORICAL HERITAGE AND CULTURAL INTEREST. WHETHER YOU WANT TO EXPLORE THE CITY OR INDULGE IN SOME RETAIL THERAPY, YOU WILL EXPERIENCE THE BEST OF PORTO WITH EVERYTHING JUST AT YOUR DOORSTEP.

BEING BUILT IN THE FIRST HALF OF THE TWENTIETH CENTURY, THE BUILDING OFFERS MODERN DESIGN WITH HIGH QUALITY FINISHES, INTEGRATED IN A BLOCK

MIXED WITH THE CHARACTERISTICS OF THE NINETEETH AND TWENTIETH CENTURY, PARTICULARLY IN THE DESIGNS OF ITS FACADES COVERED WITH TILES AND THE BALCONY WINDOWS FRAMED BY STONEWORK.

THE BUILDINGS REHABILITATION PROJECT MAINTAINED THE MOST RELEVANT EXISTING FEATURES TO ENHANCE ITS LOCAL IDENTITY, WHILE INTRODUCING THE NECESSARY INFRASTRUCTURE AND INTERIOR CHANGES TO OFFER COMFORT AND SAFETY TO ITS RESIDENTS.

TOURISTIC LICENSED APARTMENTS ALLOWING TOURISTIC RENTAL
456 SQM, 6 APTS

RETAIL
465 SQM, 1 UNIT

TOTAL CONSTRUCTION AREA
921 SQM

COMMON & TECHNICAL AREA
120 SQM

LOCATED AT THE HEART OF PORTO'S MOST SOUGHT-AFTER NEIGHBORHOOD,
THE SANTA CATARINA HOUSE IS THE PLACE TO STAY FOR THOSE WHO SEEK TASTE.

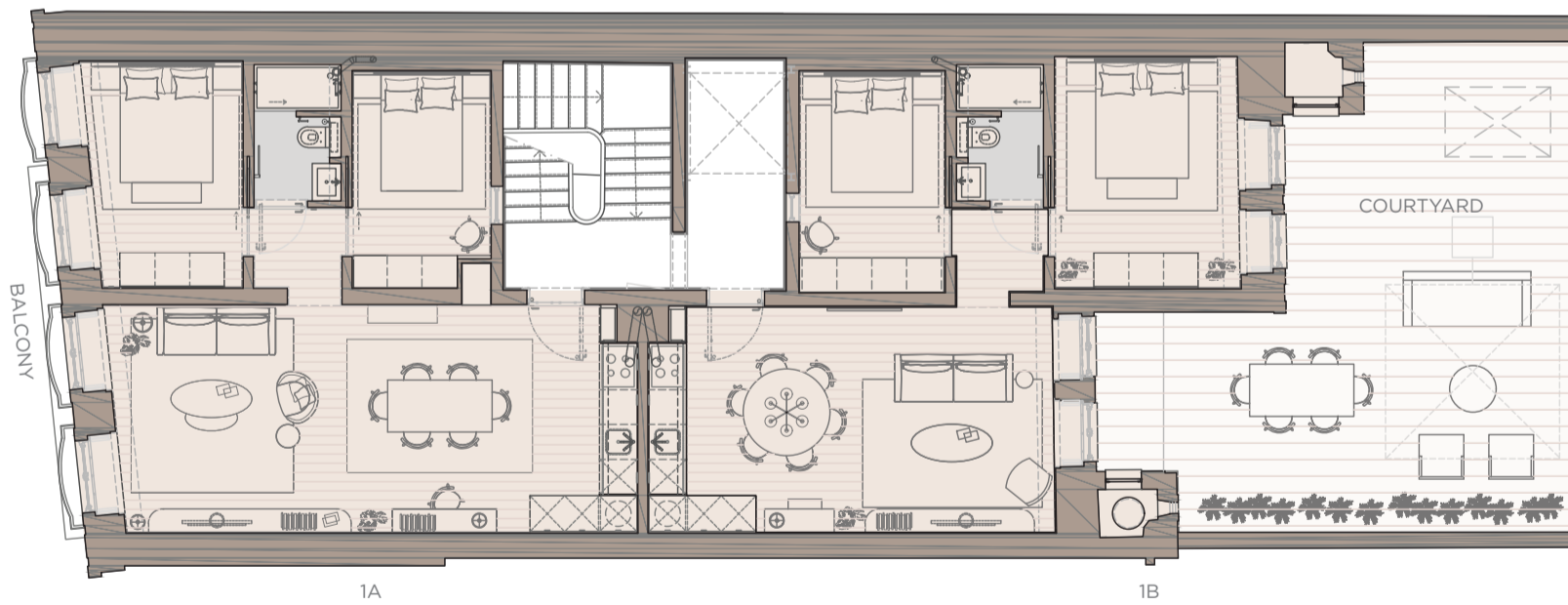




08

SANTA CATARINA HOUSE

FLOOR PLANS



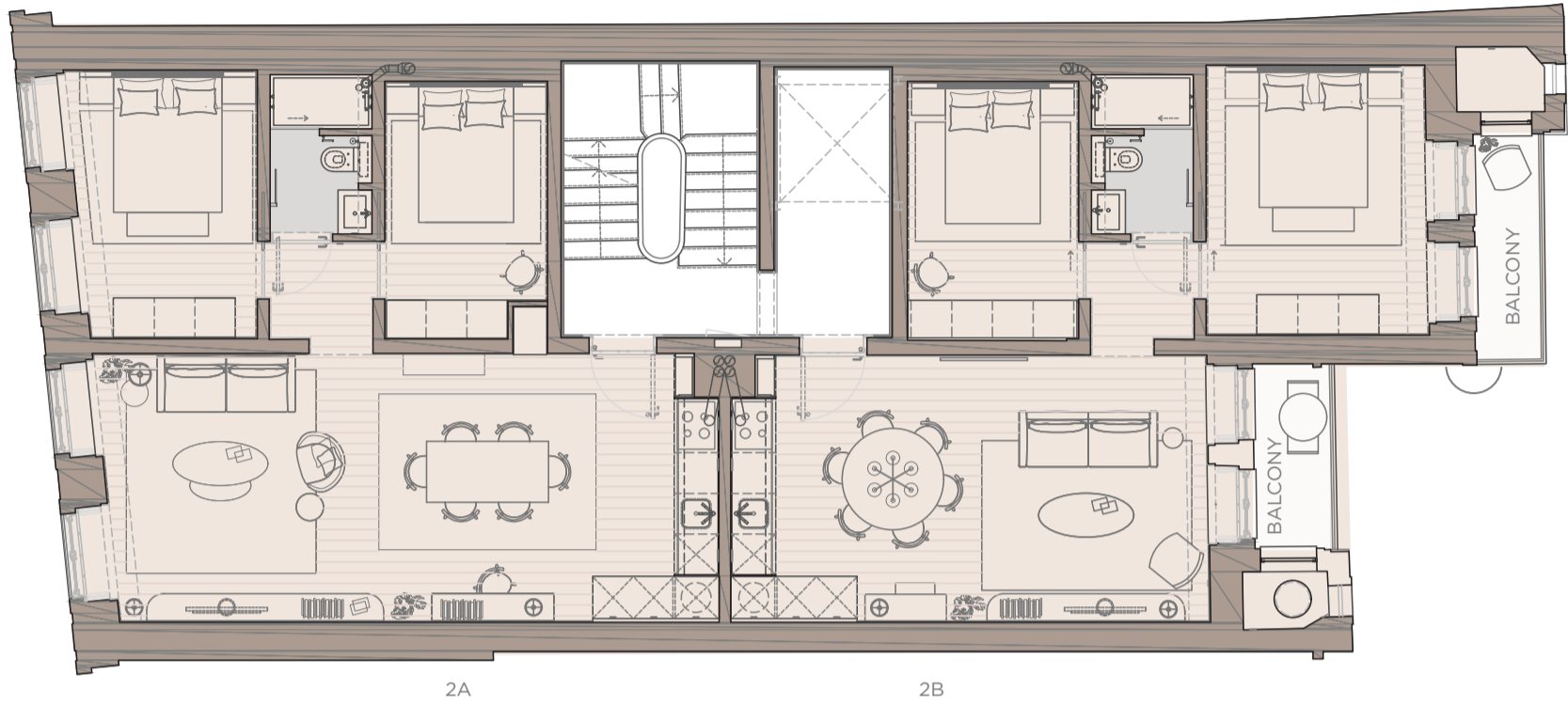
1ST FLOOR

2 APARTMENTS

1A T1+1 77,5 SQM BALCONY 2 SQM
1B T1+1 77,5 SQM COURTYARD 52 SQM

CEILING HEIGHTS
3,10M

TOTAL PER FLOOR 155 SQM



2ND FLOOR

2 APARTMENTS

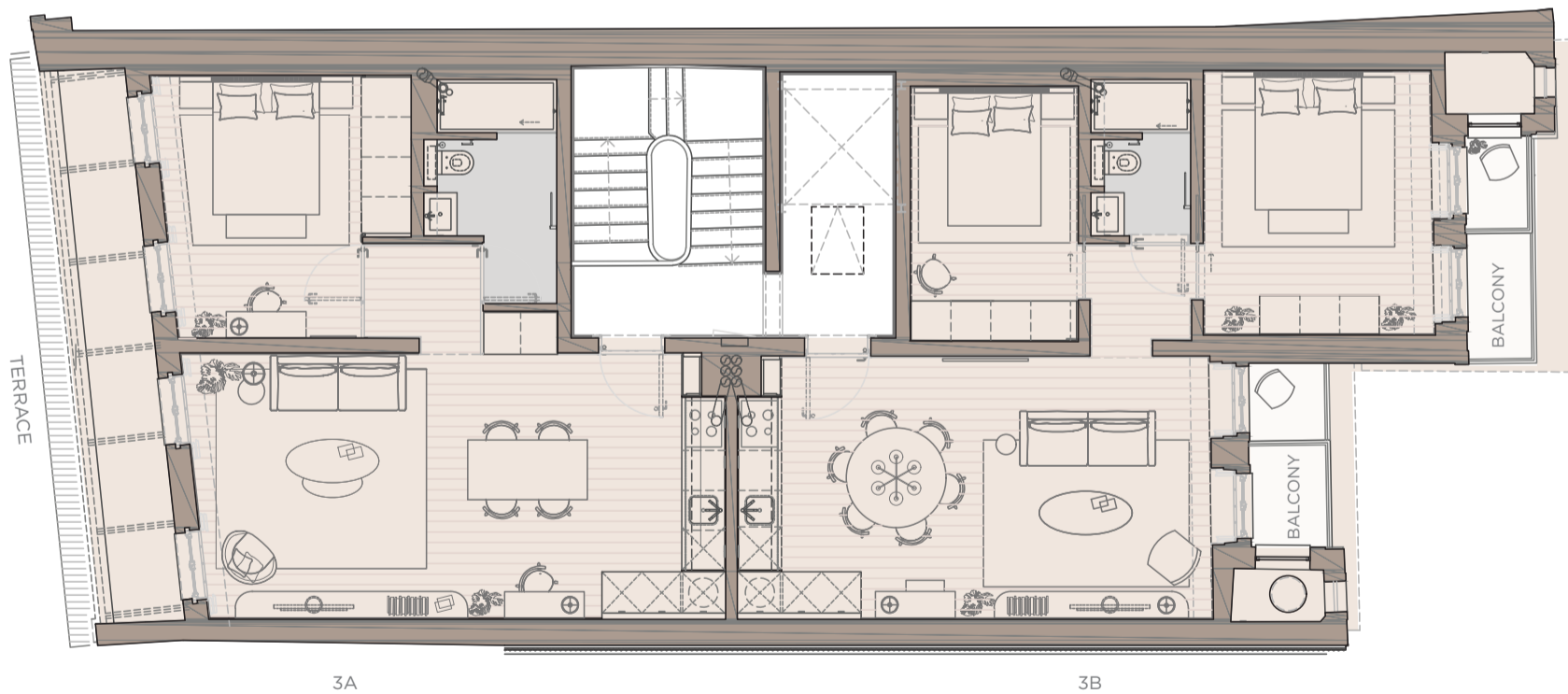
2A T1+1 77,5 SQM

CEILING HEIGHTS

2B T1+1 77,5 SQM BALCONY 6,8 SQM

3M

TOTAL PER FLOOR 155 SQM



3RD FLOOR

2 APARTMENTS

3A T1 68,8 SQM

BALCONY 8,7 SQM

CEILING HEIGHTS

3B T1+1 77,5 SQM

BALCONY 3,35 SQM

2,40M

TOTAL PER FLOOR 146,3 SQM



70













WWW.ANDOLIVING.COM
SALES@ANDOLIVING.COM
LISBON, PORTO, ALENTEJO, ISTANBUL

