

ANDO

Living



—
[ˈændo]

THIS IS NOT JUST AN APARTMENT TO *STAY AND LIVE*, BUT
A *LIFESTYLE-SERVICED RESIDENCE* CONNECTING A COMMUNITY OF TRAVELLERS
AND *LOCALS ALIKE* AND BUILT AROUND *BUSINESS* AND *LEISURE*.



TOP IMAGE

ALFAMA, NEIGHBOURHOOD IN LISBON, PORTUGAL

LISBON

THE EMERGING CAPITAL

One of the most sought-after European capitals of the moment — and one of the world's safest cities — Lisbon brings past and present together like no other.

Lisbon is a city full of beautiful contrasts. Delightful old quarters are found right next to avant-garde architecture. The great contrast of vibrant cultural scenes and streets of old boroughs construct the unique cityscape of Lisbon. Contrasts could also be found in delicacies, where traditional Portuguese cuisine and exciting new dishes are served on the same table. You might also spot local small businesses and international brands coexisting on the same streets.

There is an array of renowned scenic viewpoints from its river promenades and beaches. The spots stretch from the Northern coast of Cascais to the Southern sands of Costa da Caparica - the Portuguese capital is the hub of it all.

If you ever find yourself needing a break from such paradise on Earth, Lisbon's International Airport is just a short flight away from most European capitals.



“
the Portuguese city
caters to every taste
”



TOP IMAGE
ILLUSTRATION OF THE VIEW ALONG
TAGUS RIVER

AVENIDA DA LIBERDADE

“

LISBON'S 5TH AVENUE

”



PLACES OF INTERESTS

1. MARQUES DE POMBAL / 2. ROSSIO SQUARE / 3. ELEVATOR SANTA JUSTA / 4. CASTLE SAO JORGE / 5. SANTA CATARINA VIEWPOINT / 6. RIBEIRA / TIME OUT MARKET / 7. PRAÇA DO COMÉRCIO SQUARE / 8. SANTA APOLONIA CRUISE SHIP TERMINAL

Ando Living Liberdade Club is located a few steps away from the main and most prestigious boulevard of Lisbon which connects Marquês de Pombal roundabout (the gateway to the city's business district) with the heart of Lisbon where one can find all of the city's top attractions.

Avenida da Liberdade district is part of Lisbon's most dynamic development areas and one of the main residential, business, and touristic destinations of the capital alongside Baixa, Chiado and Belém.

This majestic boulevard with its mature trees and large sidewalks is considered the high-end hub of the city's downtown and is popularly referred to as the Champs-Élysées of Lisbon. From international luxury retail brands and critically acclaimed cuisine to some of the best hotels in town, this district gathers the best of Lisbon in one prime location.

ANDO LIVING

LIBERDADE CLUB OVERVIEW

IMAGE BELOW
ANDO LIVING LIBERDADE CLUB RENDERING





ABOVE IMAGE

LIBERDADE CLUB ELEVATIONS

TOURISTIC APARTMENTS

2,454 SQM, 42 UNITS

COMMON & TECHNICAL AREA

635 SQM

RETAIL

658 SQM, 2 UNITS

TOTAL CONSTRUCTION AREA

3,747 SQM, 44 UNITS



“
a renovated *historical architecture*
for *modern travellers*
”

HISTORICAL BUILDING

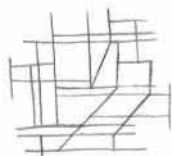
The building Rua Alexandre Herculano was built in 1889 and comprises of 6 floors above ground.

The ground floor, parts of the first floor and the basement were used for commercial purposes and were divided into 4 different stores. Parts of Floor 1 and Floors 2 to 5 were used for residential purposes.

NEW PROJECT

It is a rehabilitation project that converts the existing building into one of the first Ando Clubs in Lisbon. Historical and architectural elements of the original 1889 building would be preserved and the spaciousness will be enhanced by adding two floors to the existing structure and a roof-top pool.

The architectural project covers 3,703 sqm of gross construction area (including the retail basements).





APARTMENTS

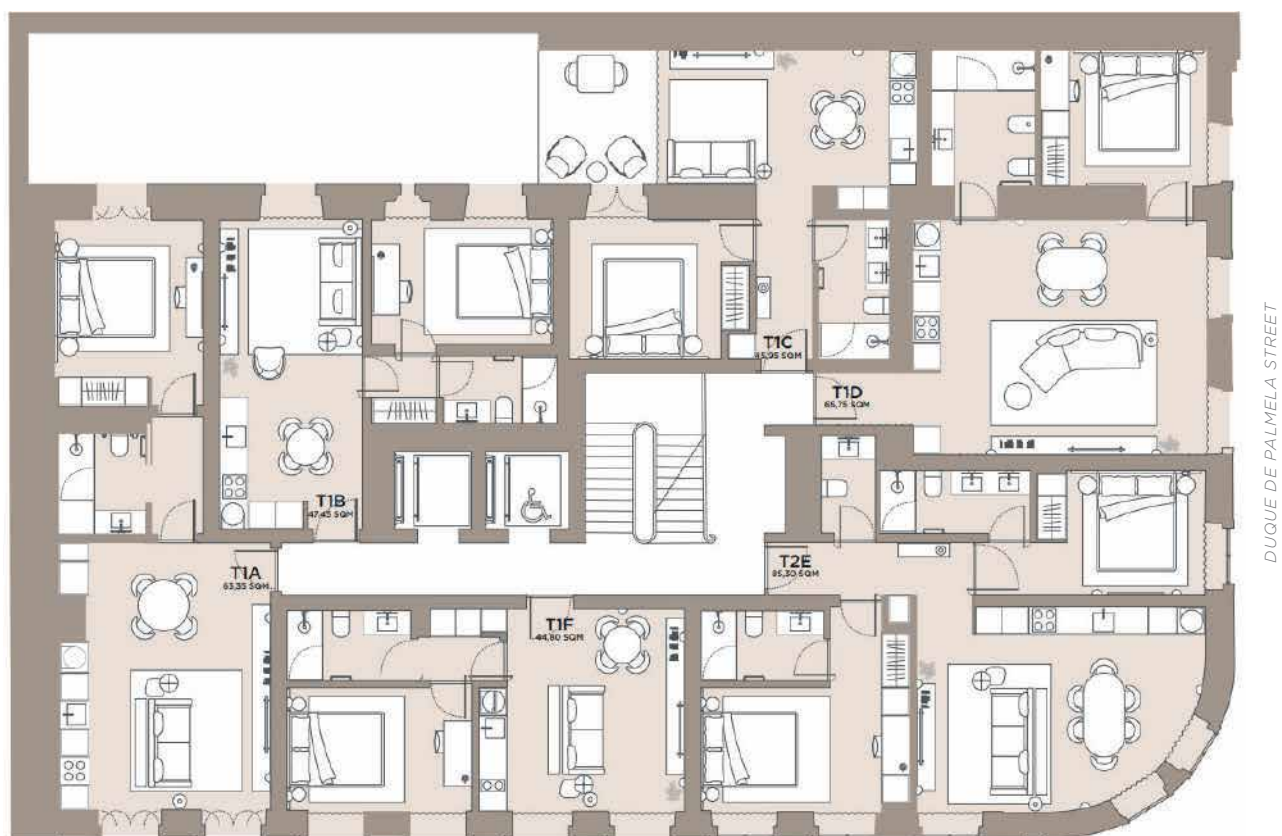
42 luxury touristic apartments, under the “Ando Living” brand will be developed and styled by award-winning designer AvroKO. In accordance with Ando Living standards, these units will have the luxury of a first-class hotel with the familiar comfort of a home in one of Lisbon’s trendiest neighbourhoods.

Each apartment will be fully equipped with a kitchen, living and working area, while also benefitting from a wide range of on-demand services, such as: Concierge service, Room service, Dry cleaning & Laundry,

CLUB

Liberdade Club will offer residents state-of-the-art hotel-like amenities (rooftop pool & terrace, extended living and gym), as well as living spaces that bring like-minded people together, in an energising and anchored setting.

TOP IMAGE
LIBERDADE CLUB
ROOFTOP POOL RENDERING



ALEXANDRE HERCULANO STREET

DUQUE DE PALMELA STREET



FLOOR PLANS AREAS

FROM 1-4TH FLOORS

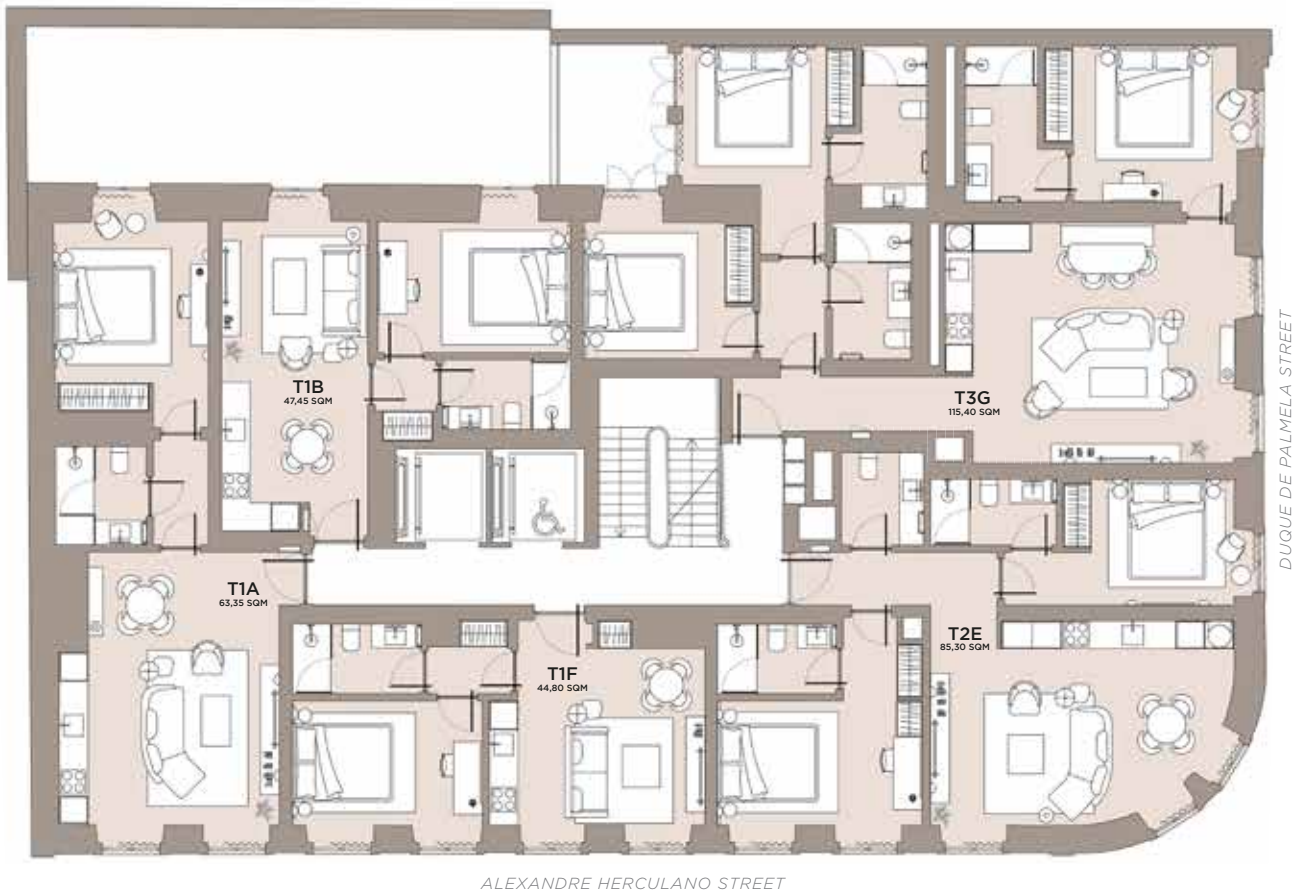
- T1A 63,35 SQM
- T1B 47,45 SQM
- T1C 45,95 SQM
- T1D 65,75 SQM
- T2E 85,30 SQM
- T1F 44,80 SQM

TOTAL PER FLOOR 353 SQM

6 APARTMENTS PER FLOOR

CEILING HEIGHTS

1-4TH FLOORS - 3,25M



FLOOR PLANS AREAS

FROM 5TH FLOOR

T1A 63,35 SQM

T1B 47,45 SQM

T3G 115,40 SQM

T2E 85,30 SQM

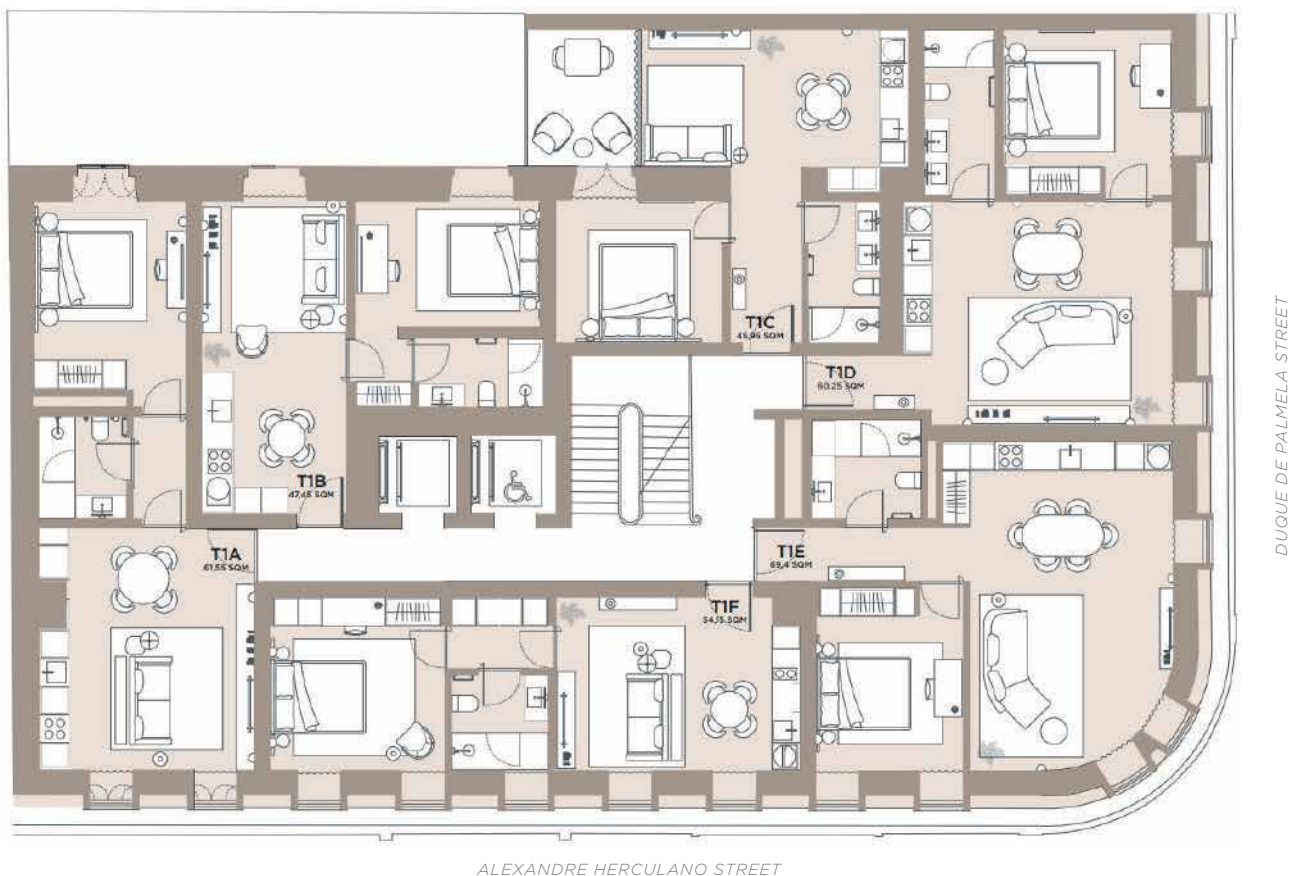
T1F 44,80 SQM

TOTAL PER FLOOR 356 SQM

5 APARTMENTS PER FLOOR

CEILING HEIGHTS

5TH FLOOR - 3,10 M



FLOOR PLANS AREAS

FROM 7TH FLOOR

T1A 61,55 SQM

T1B 47,45 SQM

T3G 115,15 SQM

T1E 69,40 SQM

T1F 54,15 SQM

TOTAL FLOOR 347,70 SQM

5 APARTMENTS PER FLOOR

CEILING HEIGHTS

7TH FLOOR - 2,50M

LIBERDADE CLUB

APARTMENT PLANS



TOP IMAGE

LIVING ROOM, APARTMENT T1A RENDERING



APARTMENT T1A

GROSS PRIVATE AREA 63,35 SQM
CEILING HEIGHT 3,10 - 3,25 M
EXPOSITION: ALEXANDRE HERCULANU STREET +
COURTYARD
FLOOR 1-6



APARTMENT T1B

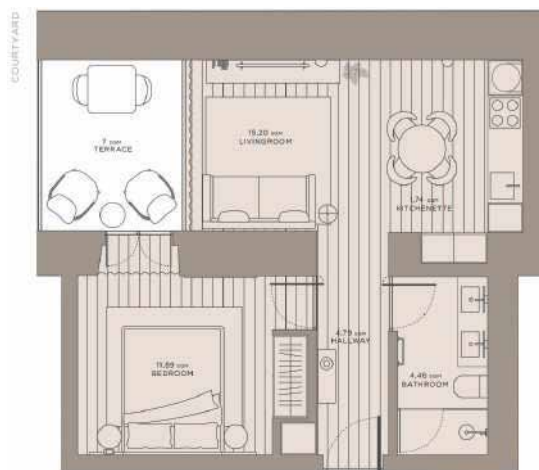
GROSS PRIVATE AREA 47,45 SQM
CEILING HEIGHT 3,10 - 3,25 M
EXPOSITION: COURTYARD
FLOOR 1-6





TOP IMAGE

BEDROOM, APARTMENT T1D RENDERING



APARTMENT T1C

GROSS PRIVATE AREA 45,95 SQM
TERRACE 7 SQM
CEILING HEIGHT 3,25 M
EXPOSITION: COURTYARD
FLOOR 1-4



APARTMENT T1D

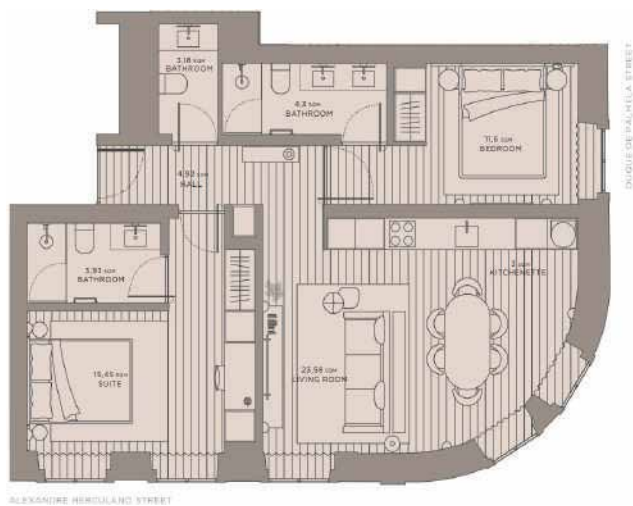
GROSS PRIVATE AREA 65,75 SQM
CEILING HEIGHT 3,25 M
EXPOSITION: DUQUE DE PAMELA STREET
FLOOR 1-4





TOP IMAGE

LIVING ROOM, APARTMENT T2E RENDERING



APARTMENT T2E

GROSS PRIVATE AREA 85,3 SQM

CEILING HEIGHT 3,10 - 3,25 M

EXPOSITION: ALEXANDRE HERCULANO + DUQUE
DE PALMELA STREET

FLOOR 1-6





TOP IMAGE

BEDROOM, APARTMENT T2E RENDERING



ALEXANDRE HERCULANO STREET

APARTMENT T1F

GROSS PRIVATE AREA 44,80 SQM
CEILING HEIGHT 3,10 - 3,25 M
EXPOSITION: ALEXANDRE HERCULANO STREET
FLOOR 1-6





TOP IMAGE

BEDROOM, APARTMENT T3G RENDERING



APARTMENT T3G

GROSS PRIVATE AREA 115,40 SQM

TERRACE 7 SQM

CEILING HEIGHT 3,10 M

EXPOSITION: COURTYARD + RUA DUQUE DE PALMELA

FLOOR: 5-6





TOP IMAGE

BEDROOM, APARTMENT T1A RENDERING



APARTMENT T1A

GROSS PRIVATE AREA 61,55 SQM

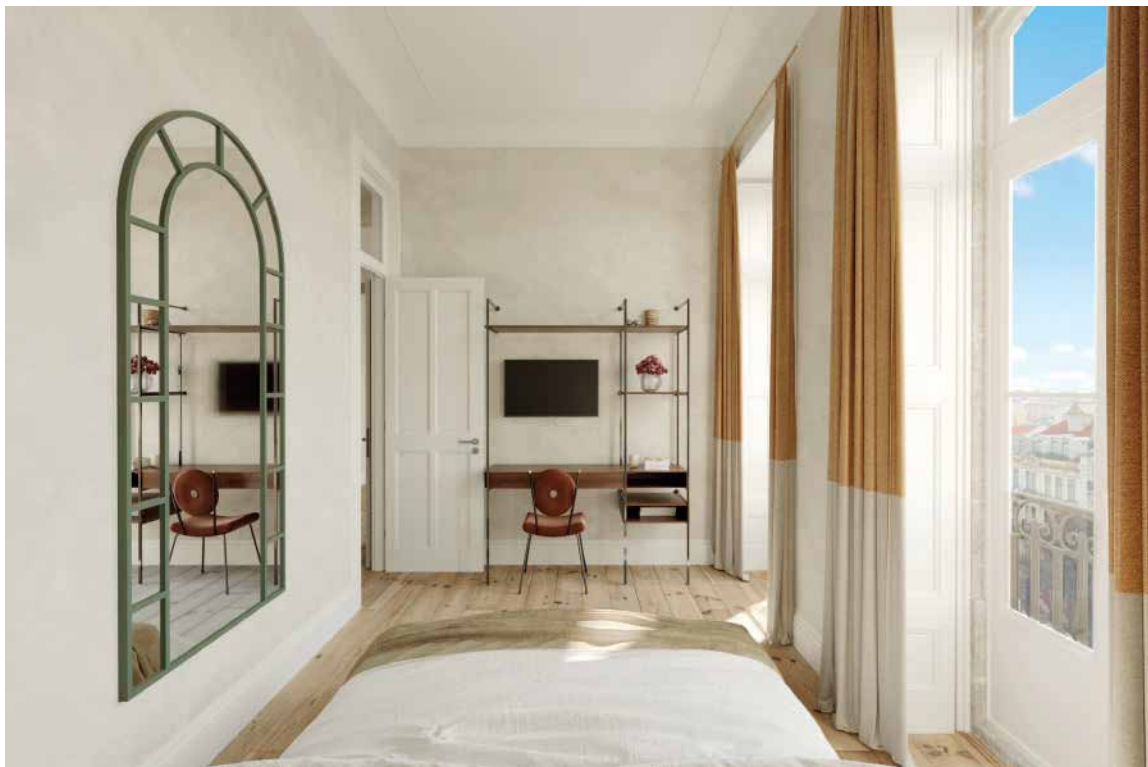
CEILING HEIGHT 2,50 M

EXPOSITION: ALEXANDRE HERCULANO STREET +

COURTYARD

FLOOR 7

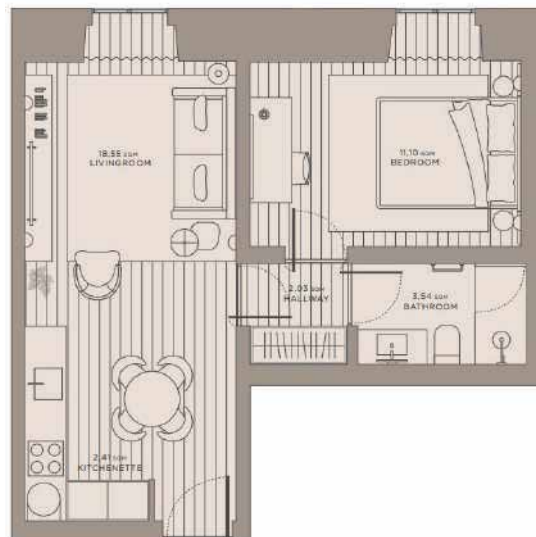




TOP IMAGE

BEDROOM, APARTMENT T1B RENDERING

COURTYARD



APARTMENT T1B

GROSS PRIVATE AREA 47,45 SQM

CEILING HEIGHT 2,50 M

EXPOSITION: COURTYARD

FLOOR 7





TOP IMAGE

LIVING ROOM, APARTMENT T1C RENDERING



APARTMENT T3G

GROSS PRIVATE AREA 115,15 SQM

TERRACE 7 SQM

CEILING HEIGHT 2,50 M

EXPOSITION: COURTYARD + RUA DUQUE DE PALMELA

FLOOR: 7





TOP IMAGE

LIVING ROOM, APARTMENT T1E RENDERING



APARTMENT T1E

GROSS PRIVATE AREA 69,40 SQM
CEILING HEIGHT 2,50 M
EXPOSITION: ALEXANDRE HERCULANO + DUQUE
DE PALMELA STREET
FLOOR 7



TOP IMAGE

BATHROOM, APARTMENT T1F RENDERING



ALEXANDRE HERCULANO STREET

APARTMENT T1F

GROSS PRIVATE AREA 54,15 SQM
CEILING HEIGHT 2,50 M
EXPOSITION: ALEXANDRE HERCULANO STREET
FLOOR 7





TOP IMAGE

CONCEPT STORE RENDERING

ARCHITECT

FREDERICO VALSASSINA
ARQUITECTOS

Graduated in Architecture from the Lisbon School of Fine Arts in July 1979.

He has reference projects in the area of rehabilitation, namely the Palace of the Counts of Murça, the Contador-Mor Palace and the residential building on Av. da República 37, all of which have been awarded the National Prize for Urban Rehabilitation.

He has developed projects in various areas such as the Herdade do Freixo Winery, in Alentejo, the Alcântara Wastewater Treatment Plant roof, in partnership with Manuel Aires Mateus and João Nunes, and the new CUF Tejo Hospital in Lisbon.

LIBERDADE CLUB

FINISHINGS LIST

GENERAL FEATURES

FACADE	EXTERIOR SPANS (LEVEL 0): EXTERIOR SPANS (LEVEL 1 TO 5): BALCONIES: MAIN ENTRANCE DOOR: INTERIOR SPANS: LIFT:	RENDER COATING PAINTED WHITE; RENDER COATING PAINTED WHITE; EXISTING LIOZ STONE (FLOORING); STEEL BALLUSTRADES PAINTED DARK GREEN; WOOD DOOR, PAINTED DARK GREEN; PAINTED WHITE; BRAND TO BE DEFINED IN DUE COURSE.
SPECIAL EQUIPMENT	AIR CONDITIONING: WATER HEATING: KITCHEN FUME EXTRACTION: WASTE AND DOMESTIC WATER: FIRE DETECTION SYSTEM: ACCESS CONTROL:	INTEGRATED; ELECTRIC WATER TANK; BUILT-IN; ACCORDING TO THE ENGINEERING; ACCORDING TO THE ENGINEERING; ACCORDING TO THE ENGINEERING.

COMMON AREAS

BUILDING ENTRANCE	FLOOR AND SKIRT: WALLS: CEILING:	STONE OR WOODFLOOR OR EQUIVALENT; SMOOTH PLASTER PAINTED; SMOOTH PLASTERBOARD WHITE PAINTED.
STAIRCASE	FLOOR: WALLS: CEILING:	WOOD FLOORING; SMOOTH PLASTER; SMOOTH PLASTER WHITE PAINTED.

APARTMENTS

HALL AND CIRCULATION AREA	FLOOR: SKIRTING: WALLS: CEILING SMOOTH: CORNICE MOULDINGS:	WOOD FLOORING VARNISHED; MDF SKIRTING WHITE LACQUERED; SMOOTH PLASTER PAINTED; PLASTERBOARD WHITE PAINTED; WHITE PAINTED.
---------------------------	---	---

THE INFORMATION CONTAINED IN THIS LIST IS MERELY INDICATIVE AND MAY, FOR TECHNICAL, COMMERCIAL OR LEGAL REASONS, BE SUBJECT TO CHANGE OR VARIATION WITHOUT NOTICE. THE 3D RENDERINGS INCLUDED IN THIS LIST ARE INDICATIVE AND MAY BE SUBJECT TO CHANGE WITHOUT NOTICE. THESE RENDERINGS AND DOCUMENT DO NOT REPRESENT A CONTRACT AND ARE NON-BINDING.

ANDO LIVING LIBERDADE CLUB - JULY 2022

LIBERDADE CLUB

FINISHINGS LIST

APARTMENTS

LIVING ROOM	FLOOR: SKIRTING: WALLS: CEILING: CORNICE MOULDINGS:	WOOD FLOORING VARNISHED; MDF SKIRTING WHITE LACQUERED; SMOOTH PLASTER PAINTED; SMOOTH PLASTERBOARD PAINTED; WHITE PAINTED.
KITCHENETTE	CUPBOARDS: COUNTER WORKTOP: HOB VITROCERAMIC COOK-TOP: OVEN: MICROWAVE: DISHWASHER: WASHING MACHINE: FRIDGE - FREEZER: EXTRACTOR: WATER TAP:	CUPBOARDS LACQUERED WATERPROOF MDF WITH MELAMINE INTERIORS; STONE OR COMPOSITE MATERIAL OR EQUIVALENT; BOSCH OR SIEMENS, OR EQUIVALENT; BOSCH OR SIEMENS, OR EQUIVALENT; BOSCH OR SIEMENS, OR EQUIVALENT; BOSCH OR SIEMENS, OR EQUIVALENT; BOSCH OR SIEMENS, OR EQUIVALENT; BOSCH OR SIEMENS, OR EQUIVALENT; BUILT-IN EXTRACTOR (BOSCH OR SIEMENS, OR EQUIVALENT); MIXER WATER TAP FRANKE OR EQUIVALENT.
BEDROOMS	FLOOR: SKIRTING: WALLS: CEILING: CORNICE MOULDINGS:	WOOD FLOORING VARNISHED OR CARPETING; MDF SKIRTING WHITE LACQUERED; SMOOTH PLASTER PAINTED; SMOOTH PLASTERBOARD PAINTED; WHITE PAINTED.
BATHROOM AND SANITARY WARES	FLOOR: WALLS: CEILING SMOOTH WATERPROOF: COUNTER SINK: SHOWER: TAPS:	LIGHT NATURAL STONE OR TILES OR EQUIVALENT; LIGHT EPOXY WATERPROOF RESIN OR TILES OR EQUIVALENT; LIGHT EPOXY WATERPROOF RESIN OR SMOOTH WATERPROOF PLASTERBOARD PAINT; NATURAL STONE OR COMPOSITE MATERIAL OR EQUIVALENT SHOWER BASE IN NATURAL STONE OR COMPOSITE MATERIAL OR EQUIVALENT; BRUMA BRAND, OR EQUIVALENT.
JOINERY	WARDROBES DOORS: INTERIOR DOORS:	WARDROBE IN WOOD VENEER OR LAQUERED MDF OR EQUIVALENT; MELAMINE INTERIORS OR EQUIVALENT.

THE INFORMATION CONTAINED IN THIS LIST IS MERELY INDICATIVE AND MAY, FOR TECHNICAL, COMMERCIAL OR LEGAL REASONS, BE SUBJECT TO CHANGE OR VARIATION WITHOUT NOTICE. THE 3D RENDERINGS INCLUDED IN THIS LIST ARE INDICATIVE AND MAY BE SUBJECT TO CHANGE WITHOUT NOTICE. THESE RENDERINGS AND DOCUMENT DO NOT REPRESENT A CONTRACT AND ARE NON-BINDING.

ANDO LIVING LIBERDADE CLUB - JULY 2022



WWW.ANDOLIVING.COM
LISBON, PORTO, ALENTEJO, ISTANBUL